

Cellular modem for Honeywell®, Itron®, Landis+Gyr® electricity meters

Wireless communication modem that has been designed specifically for the automatized remote readout of electricity meters. The device can be ordered with various wireless module types.

You can save money by using our modem because furthermore there is no need for manual readout of the meter systems.

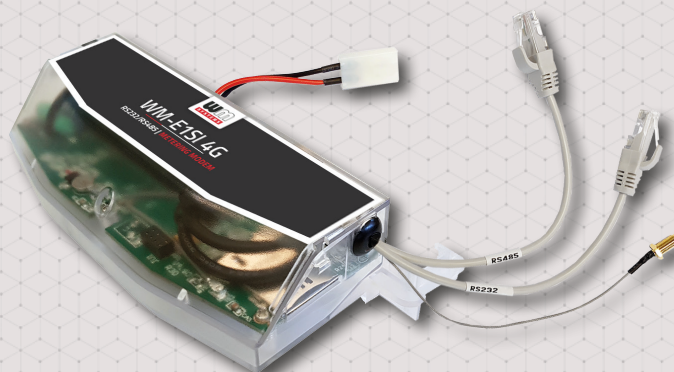
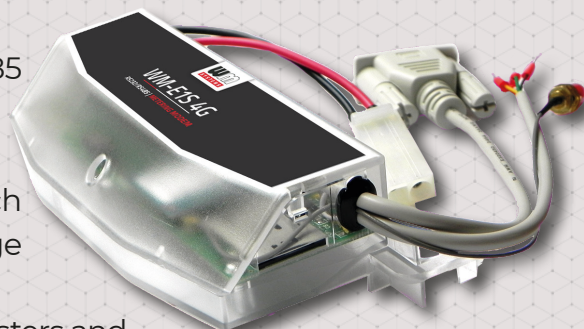
The modem is connectable through its RS232 and RS485 connection, it provides transparent data link to the HES, through the wireless network.

By option, the 2 digital input feature is also available, which can be used for input status monitoring and sabotage detection.

The device can be used to remotely read the meter's registers and modify the modem parameters. The readout takes place in „PULL” mode, the modem provides transparent communication between the meter and the electricity provider's HES center.

The modem can be installed under the terminal cover of the meter sealed by the service provider.

The device is configurable with our WM-E Term® application.



MAIN FEATURES

- Cellular module order options:
 - LTE Cat.1 module with 2G or 3G/2G „fallback” feature
 - LTE Cat.M / Cat.NB module with optional 2G „fallback” feature
- It can be assembled into the meter's enclosure and fastened
- Power supply (AC) from metrology (optional DC)
- Inputs:
 - RS232 connector (D-SUB9 / D-SUB25 / RJ12 / RJ45)
 - RS485 connector (2/4-wire/ RJ12 / RJ45)
 - 2 digital inputs (monitoring / sabotage detection) - optional
- Compatibility:
 - Honeywell® Alpha A1500, A1700, A1800, A1140, A1160 meters
 - Itron® SL7000, EM600 (E620), ACE6000, ACE8000 meters
 - Landis+Gyr® ZMG type electricity meters
 - Installable to any meter as universal, external modem
- Surge protection option (from 4kV up to 12kV)
- Supercapacitor option (SMS notification of power outage)
- „Pull” mode, IEC 62056-21, transparent data transmission
- WM-E Term® application (mass configuration, FW refresh)
- Device Manager® software (order options)

APPLICATION

- UTILITY COMPANIES
- SMART METERING
- INDUSTRIAL MEASUREMENT



DESIGN AND OUTFIT

- The modem is installable inside the meter enclosure
- RS232 connector options (D-SUB9 / D-SUB25 / RJ12 / RJ45)
- RS485 connector options (2- or 4 wire / RJ12 / RJ45)
- 2 digital input option (input status / sabotage detection)
- AC power from the meter (optional DC power)

COMPATIBILITY

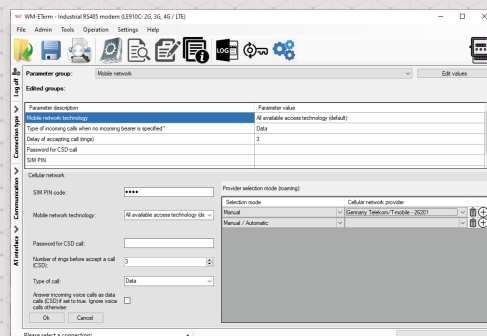
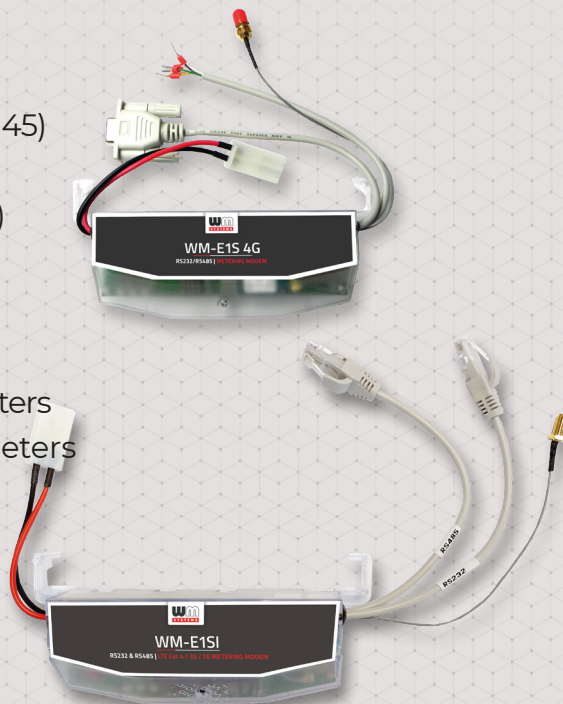
- Honeywell® Alpha A1500, A1700, A1800, A1140, A1160 meters
- Itron® SL7000, EM600 (E620), ACE6000, ACE8000 meters
- Landis+Gyr® ZMG electricity meters
- Installable to any meter as universal, external modem

OPERATION

- „Pull” mode
- IEC 62056-21 protocol, transparent data transmission
- CSDData call (2G)

ACCESSORIES

- RJ45 cable, converter (for meter connection)
- External SMA or FME antenna (50 Ohm) - order option
- WM-E Term® software (mass fw updates, configuration)
- You can manage the device by Device Manager® software



WM-ETIS®		LTE Cat.1		LTE Cat.M / Cat.NB	
Power Voltage / Nominal Frequency		~100-230V AC +15%/-15%, 50-60Hz +/- 5% (AC power supplied by the meter) / Optional DC power (order option) can be connected: Input Voltage: 8..28V DC			
Power Consumption / Current		Average: 2.9W, 230VAC Stand-by: 24mA 100V, 12mA 230V / Average: 30mA 100V, 15mA 230V / Max: 0.15A @ 230V / DC Input Power: max 5W (peak)			
Communication module	Cellular technology	- LTE Cat.1 - 3G/2G "fallback"	- LTE Cat.1 - 2G "fallback"	- LTE Cat.M / Cat.NB	- LTE Cat.M / Cat.NB - 2G "fallback"
	Internet module	- Telit LE910C1-EUX	- Telit LE910S1-EA	- Telit ME910C1-EI	- Telit ME910C1-WW
	Bands / Frequency (MHz)	- LTE-FDD: B1(2100) / B3(800) / B7(2600) / B8(900) / B20(800) / B28A(700) - 3G: B1(2100) / B3(800) / B8(900) - 2G: B3(800) / B8(900)	- LTE-FDD: B1(2100) / B3(800) / B5(800) / B7(2600) / B8(900) / B20(800) / B28(700) - LTE-TDD: B38(2600) / B40(2300) / B41(2500) - 2G: B3(800) / B8(900)	- LTE M1 & NB1: B3(800) / B8(900) / B20(800)	- LTE: B1(2100) / B2(900) / B3(800) / B4(700) / B5(850) / B8(900) / B12(700) / B13(700) / B18(800) / B19(800) / B20(800) / B25(900) / B26(850) / B27(800) / B28(700) / B66(700) / B71(600) / B85(700) - LTE Cat.M / Cat.NB: B3(800) / B8(900) / B20(800) / B25(900) / B26(850) / B27(800) / B28(700) / B66(700) / B71(600) / B85(700) - 2G: B2(900) / B3(800) / B5(850) / B8(900)
	Speed (DL/UL)	- LTE Cat.1: 10/5 Mbps - HSPA+: 42 Mbps - GPRS: 80/40 kbps	- LTE Cat.1: 10/5 Mbps - GPRS: 80/40 kbps	- LTE M1 UL/DL: 375/300 kbps - LTE NB1 UL/DL: 20-250/250 kbps	- LTE Cat.M: 1 Mbps/588 kbps - LTE Cat.NB: 160/120 kbps - 2G (EGPRS): 210/264 kbps
	SIM card slot	- mini SIM card (2FF type, push-insert SIM)			
	Antenna connector	- External antenna connector (SMA, 50 Ohm)			
Compatibility	Meter type	- Honeywell / Elster® Alpha A1500 / A1800 / A1700 and A1140 / A1160 electricity meters - Itron® SL7000, EM600 (E620), ACE6000, ACE8000 meters - Landis+Gyr® ZMG electricity meters - External usage as universal modem for any compatible meter			
Interfaces	Connectors (order options)	- RS232 (D-SUB9 / D-SUB25 / RJ12 / RJ45 connector options) - RS485 (2-wire/4-wire connector or RJ12 / RJ45 connector options) - 2 digital input connector (for monitoring, sabotage detection) - Power supplied by meter (AC power, pigtail connector or ferrule connector / 2-pins) - optional DC power input (order option)			
Operation	Protocol / Transmitting	- EN 62056-21, Mode C - 300-115200 baud serial data speed - „Pull” mode, transparent transmission - CSData (2G) call			
	Notification	- Immediate alarm notification (LastGASP - power loss) - Notification of input status changes / sabotage detection			
	Configuration	- WM-E Term® tool (local/remote single or mass parameter configuration, firmware update) - DMSet® software - optional (remote config, parametrizing) - Device Manager software (order option)			
EMC compatibility	Indication	- 3 status LEDs			
	RTC Backup Battery*	- Power outage < =1 hour - After 1 hour the RTC will be supplied from the meter - Supercapacitor (for Last GASP SMS notification from power outages) - order option			
Construction	Surge withstand	- 4kV (peak), 12/50µs, line to line 2D - 6kV (peak), 12/50µs, line to earth (ground) 2D - 12kV, Rsource = 40Ω (12/50µs, Impulse 1 min) - Dielectric test: 4kV, 1 min, 50Hz			
	Temperature	- Operating: from -40°C to +70°C at 95% rel.humidity - Storage: from -40°C to +80°C at 95% rel.humidity			
	Enclosure	- IP51 plastic transparent casing, mountable into the meter enclosure			
	Dimension / Weight	- 162 x 66 x 30mm (without antenna and cables) - 98-130gr (according to expansion board and cable outfit)			



The presented images on the datasheet are for illustration purposes only. The details on the data sheet are for general information purposes only. WM Systems LLC cannot be held liable for erroneous information on the datasheet. The announced information are subject to change without notice. For more details, please contact us.