

## LTE Cat.4 cellular modem for Itron® electricity meters

This cellular modem has been specifically designed for use with specific Itron® electricity meters.

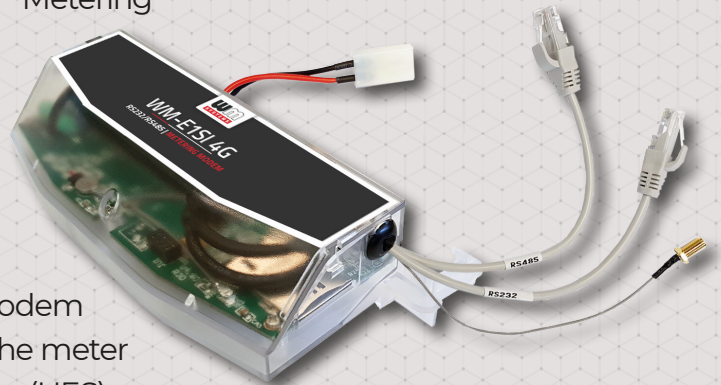
The modem has RS232 and RS485 connection capabilities, and provides transparent data link to the HES, through the 2G / 3G / 4G LTE wireless network.

Our modem forms part of the AMI (Advanced Metering Infrastructure) of the utility company.

The modem is suitable for remote readout of electricity meter registers and modification of configuration.

The readout takes place in „PULL” mode, the modem provides transparent communication between the meter and the electricity provider’s measurement center (HES).

The modem can be installed under the terminal cover of the meter sealed by the service provider. The modem can be configured using the WM-E Term® application.



### MAIN FEATURES

- LTE Cat.4 / 3G / 2G module
- It can be installed into the meter enclosure and fastened securely
- Design & connectivity satisfy meter manufacturer standards
- Sealed and separated from the meter
- Power supply from the meter (AC power)
- Compatible with Itron® SL7000 , EM600 (E620), ACE6000, ACE8000 electricity meters
- RS232 connection (RJ45)
- RS485 connection (RJ45)
- Optional surge protection from 4kV up to 12kV
- „Pull” mode
- Transparent data sending (IEC 62056-21 protocol)
- It can also be operated from a private network with NAT, the modem connects to the HES (Head End System)
- Supercapacitor option (LastGASP message from power outage)
- Remote & safe firmware updates
- WM-E Term® configuration software (mass modem configuration and firmware updates)
- Device Manager® software (order option)

### APPLICATION

- UTILITY COMPANIES
- SMART METERING
- INDUSTRIAL MEASUREMENT



## DESIGN AND OUTFIT

- The modem is installable inside the meter enclosure
- RS232 and RS485 interface connections (RJ45)
- AC power from the meter
- SMA / FME antenna cable

## COMPATIBILITY

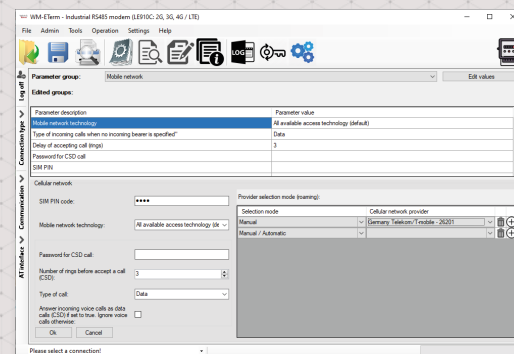
- Itron® SL7000, EM600 (E620), ACE6000 and ACE8000 electricity meters

## OPERATION

- „Pull” data sending
- Transparent data transmission

## ACCESSORIES

- RJ45 cable (for connecting Itron® meters) - order option
- Converter cable (for connecting the Landis+Cyr® meters) - order option
- External SMA or FME antenna (50 Ohm) - order option
- WM-E Term® software (mass FW updates, actualization of settings)
- You can manage the device by Device Manager® software



WM-E1SI®		LTE Cat.4	
<b>Power Voltage / Nominal Frequency</b>		~100-230V AC +15%/-15% , 50-60Hz +/- 5% (AC power supplied by the meter) / Optional DC power (order option) can be connected: Input Voltage: 8..28V DC	
<b>Power Consumption / Current</b>		Average: 2.9W, 230VAC - Stand-by: 24mA 100V, 12mA 230V / Average: 30mA 100V, 15mA 230V / Max: 0.15A @ 230V / DC: Input Power: max 5W (peak)	
<b>Communication module</b>	Cellular technology	LTE Cat.4 / 3G / 2G	
	Internet module	SIMCom A7602E-H	
	Bands / Frequency (MHz)	LTE-FDD: B1(2100) / B3(1800) / B5(850) / B7(2600) / B8(900) / B20(800) LTE-TDD: B38(2600) / B40(2300) / B41(2500) UMTS / HSPA+: 3G: B1(2100) / B8(900) GSM/GPRS/EDGE: B8(900) / B3(1800)	
	Speed (DL/UL)	LTE Cat.4 release 9 compliant: 150/50 Mbps HSPA+ Cat.20/Cat.6: 42/5.7 Mbps UMTS: 384/384 kbps EDGE: 236/236 kbps GPRS: 85.6/85.6 kbps	
	SIM card slot	mini SIM card (2FF type, push-insert SIM)	
	Antenna connector	External antenna connector (SMA, 50 Ohm)	
<b>Compatibility</b>	Meter type	Itron® SL7000, EM600 (E620), ACE6000, ACE8000 electricity meters	
<b>Interfaces</b>	Connectors (order options)	RS232 connector (RJ45) RS485 connector (RJ45) Power supplied by meter (AC power, pigtail connector or ferrule connector / 2-pins)	
	Protocol / Transmitting	EN 62056-21, Mode C - 300-115200 baud serial data speed - „Pull”, transparent data sending	
<b>Operation</b>	Notification	Immediate alarm notification (LastGASP - power loss)	
	Configuration	WM-E Term® tool (local/remote single or mass parameter configuration, firmware update) - Device Manager software (order option)	
	Indication	3 status LEDs	
	RTC Backup Battery*	Power outage <= 1 hour - After 1 hour the RTC will be supplied from the meter	
<b>EMC compatibility</b>	Supercapacitor	Supercapacitor (for Last GASP SMS notification from power outages) - order option	
	Surge withstand	4kV (peak), 12/50µs, line to line 2Ω - 6kV (peak), 12/50µs, line to earth (ground) 2Ω - 12kV, Rsource = 40Ω (12/50µs, Impulse 1 min) - Dielectric test: 4kV, 1 min, 50Hz	
<b>Construction</b>	Temperature	Operating: from -40°C to +70°C at 95% rel.humidity - Storage: from -40°C to +80°C at 95% rel.humidity	
	Enclosure	IP51 plastic transparent casing, mountable into the meter enclosure	
	Dimension / Weight	162 x 66 x 30mm (without antenna and cables) - 130gr	



The presented images on the datasheet are for illustration purposes only. The details on the data sheet are for general information purposes only. WM Systems LLC cannot be held liable for erroneous information on the datasheet. The announced information are subject to change without notice. For more details, please contact us.