

# USB/RS232 DONGLE FOR WM-E2SL MODEM



**USB adapter for configuration of WM-E2SL® LANDIS+GYR compatible modems**

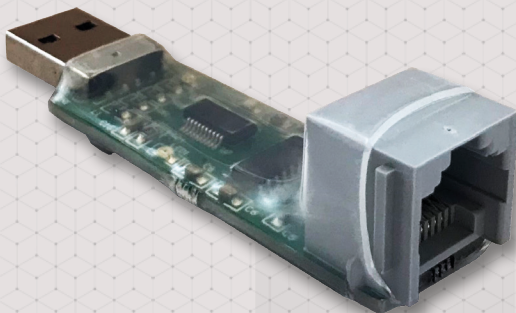
This adapter has two parts: USB/RS232 DONGLE and an RJ45-RJ45 converter cable.

The RS232 compatible USB Dongle has an USB connector (for connecting a PC) and an RJ45 socket to connect the WM-E2SL (LANDIS+GYR® compatible) modem by an RJ45-RJ45 converter cable. With this converter cable, the modem's RJ45 interface can be connected to the USB adapter.



After the connection, the modem will be reconfigurable with our WM-E Term® software.

This configuration tool is also suitable to perform firmware refresh (OTA updates).



## MAIN FEATURES

- RS232 port
- Local reconfiguration of the modem
- Safe local firmware updates

## APPLICATION

- WM-E2SL MODEMS



The presented images on the datasheet are for illustration purposes only. The details on the data sheet are for general information purposes only. WM Systems LLC cannot be held liable for erroneous information on the datasheet. The announced information are subject to change without notice. For more details, please contact us.

**WM Systems LLC**

8 Villa str., Budapest, H-1222 HUNGARY

Phone: +36 (1) 310 7075

Support: +36 (20) 333 1111

Our website: [www.wmsystems.hu](http://www.wmsystems.hu)

Sales inquiry: [intersales@wmsystems.hu](mailto:intersales@wmsystems.hu)

Support: [support@wmsystems.hu](mailto:support@wmsystems.hu)