

USB/RS232 DONGLE FOR WM-EIS MODEM



USB adapter for configuration of the WM-EIS® modems

This adapter has two parts: USB/RS232 DONGLE and an RJ45-RJ12 converter cable.

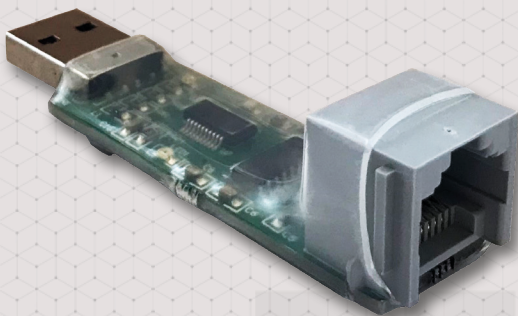
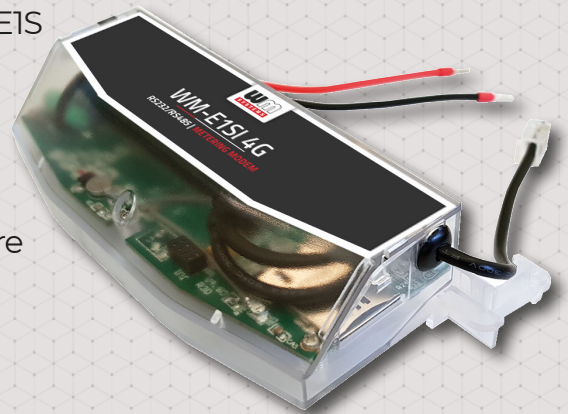
The RS232 compatible USB Dongle has an USB connector (for connecting a PC) and an RJ45 connector for connecting the RJ45-RJ12 converter cable.

This additional cable has an RJ45 socket to connect the USB adapter.

The RJ12 side of the cable is suitable to connect the WM-EIS modem.

After the connection, the modem will be reconfigurable with our WM-E Term® software.

This configuration tool is also suitable to perform firmware refresh (OTA updates).



APPLICATION

- WM-EIS MODEMS

MAIN FEATURES

- RS232 port
- Local reconfiguration of the modem
- Safe local firmware updates



The presented images on the datasheet are for illustration purposes only. The details on the data sheet are for general information purposes only. WM Systems LLC cannot be held liable for erroneous information on the datasheet. The announced information are subject to change without notice. For more details, please contact us.

WM Systems LLC

8 Villa str., Budapest, H-1222 HUNGARY

Phone: +36 (1) 310 7075

Support: +36 (20) 333 1111

Our website: www.wmsystems.hu

Sales inquiry: intersales@wmsystems.hu

Support: support@wmsystems.hu