

## Configuration software for the M2M Easy2S Security Communicator device

Our configuration software is running on Windows® operating system, which is primarily suitable for local readout (serial port) or remote readout (TCP or CSD connection) and modification of the operation parameters of the alarm- and fire alarm signaling and transmitting devices.

Also useful for setting the device's inputs according to required type (voltage/contact - NO/NC), and to set the operation of the output(s).

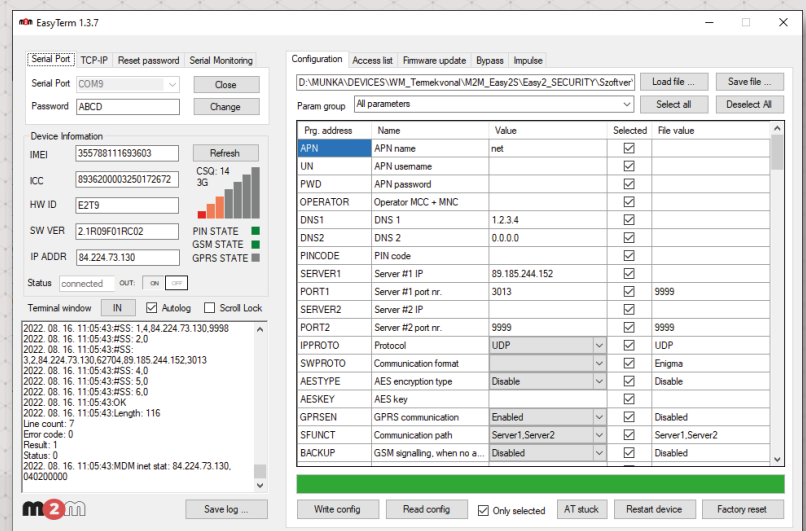
By the software is you can control the device as a gate opening system, even with manual control.

The firmware of the device can be also updated by the software.

The downloadable software is free to use for the purchased device.

Compatible with:

- M2M Easy2 Security Communicator® device (GSM/GRPS)
- M2M Easy2S Security Communicator® device (GSM/GPRS/3G/LTE)
- M2M Easy2 FIRE® device
- M2M Easy2 IO-expander PCB (further 6pcs inputs, 3pcs outputs)



## MAIN FEATURES

- Local/remote configuration of the device parameters
- Device firmware refresh by locally or remotely (TCP/FTP)
- Alarm center compatibility settings
- APN-, GPRS- and other mobile network settings
- Setting up backup routes (multiple IP addresses, GSM voice call)
- Interpretation of the setting of inputs / outputs
- Management of inputs as alarm zones
- Watchdog settings (operation monitoring)
- Call support, phone call/SMS notifications
- Door opening feature, contact list
- Status and life signals

## APPLICATION

- DISPATCHING CENTERS
- SAFETY ALARMING
- FIRE ALARM MONITORING

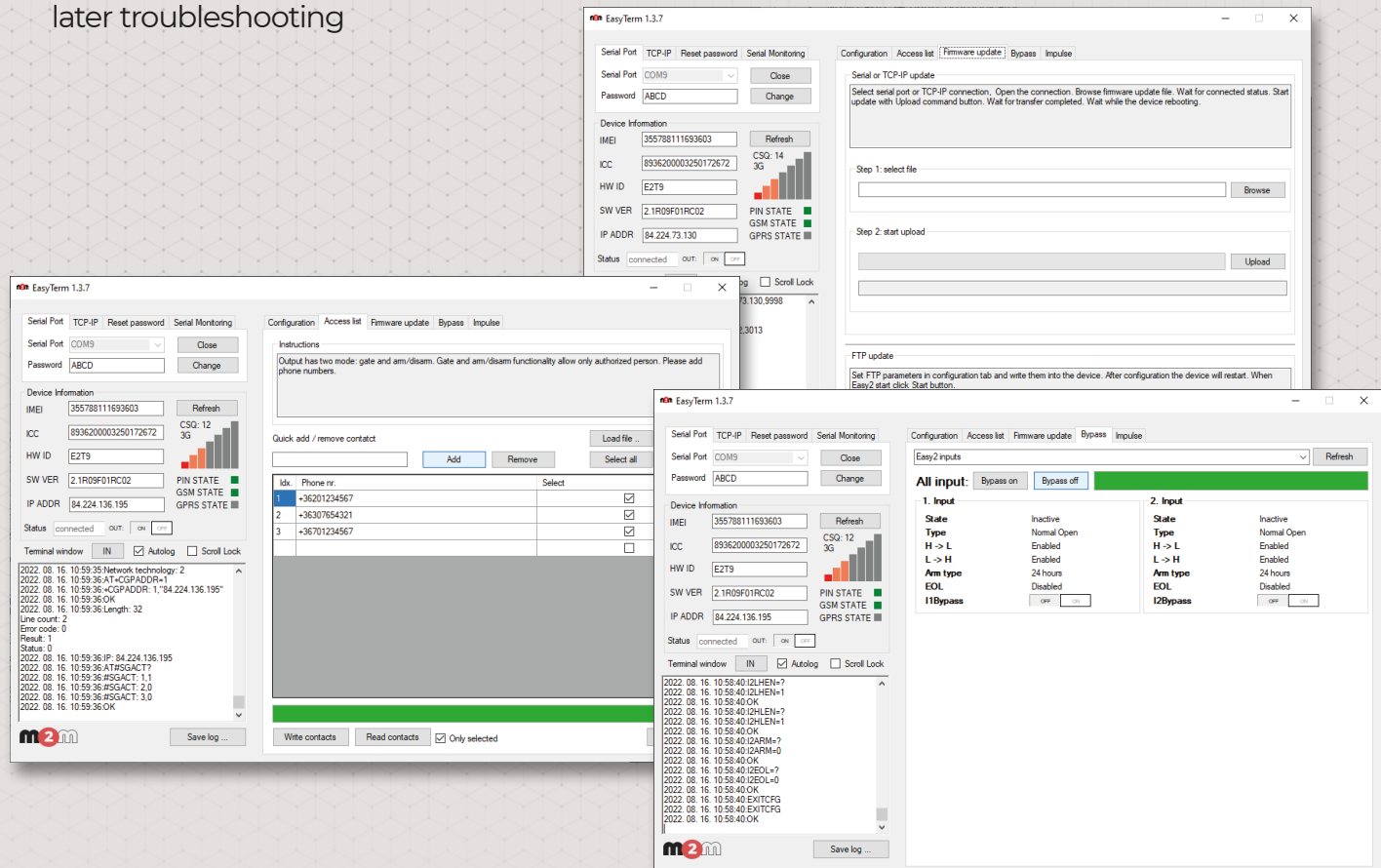
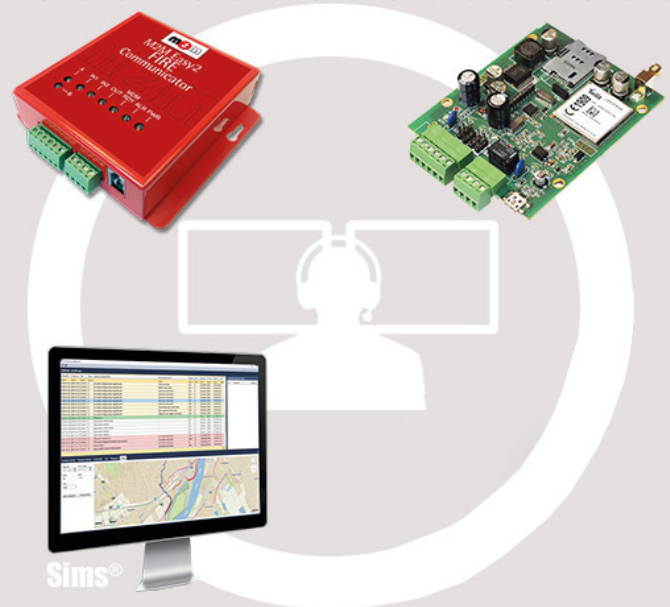


## COMPATIBILITY

- M2M Easy2 Security Communicator®
- M2M Easy2S Security Communicator® (Wireless Safety Transmitter)
- M2M Easy2 FIRE Communicator®
- M2M Easy2 IO-expander

## COMMUNICATION

- The standalone alarm system function of the communicator can be switched on / off, and zones can be bypassed (disabled)
- Ademco Contact ID message output - while the incorrect messages will be recorded in the event log
- Displaying of current cellular signal strength and used access technology
- Automatic log file creation, saving option for later troubleshooting



The presented images on the datasheet are for illustration purposes only. The details on the data sheet are for general information purposes only. WM Systems LLC cannot be held liable for erroneous information on the datasheet. The announced information are subject to change without notice. For more details, please contact us.