

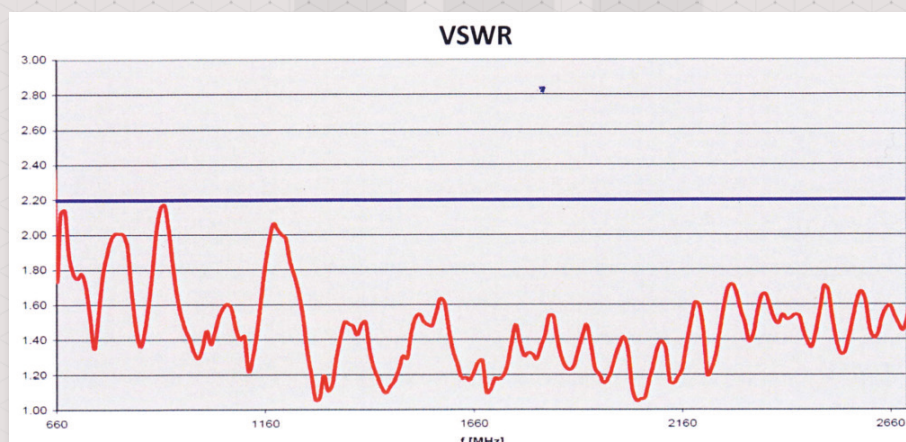
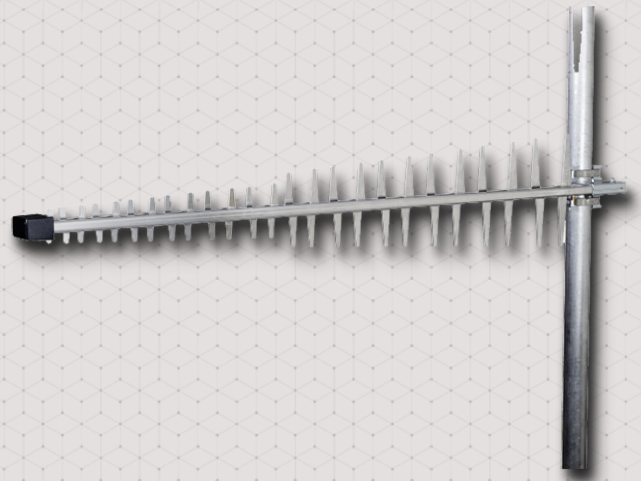
DIRECTIONAL LTE450 ANTENNA



Outdoor, broadband and high-gain (10.9-13dBi) 4G LTE directional antenna (LPA 727)

TECHNICAL FEATURES

- Technology: GSM / DCS / PCS / UMTS / LTE
- Frequency: 690-960 MHz, 1710-2185 MHz, 2500-2700 MHz
- Input Impedance: 50 Ω
- Polarization: Vertical
- Orientation: 60°
- Front to Back Ratio (F/B): >15dB
- Gain: 10.9-13 dBi:
 - 690-960 MHz max. 13.0 dBi
 - 1710-2185 MHz max. 12.0 dBi
 - 2500-2700 MHz max. 10.9 dBi
- VSWR: < 2.2 :1
- Max Input power: 10 W
- Cable: RG223
- Connector: SMA female / male
- Base material: Alloy aluminum
- Retaining clamp: Stainless steel
- Plastic parts: ABS, Polycarbonat
- Mast diameter: 30 - 60mm
- Dimensions: 200 x 1200 x 50 mm



The presented images on the datasheet are for illustration purposes only. The details on the data sheet are for general information purposes only. WM Systems LLC cannot be held liable for erroneous information on the datasheet. The announced information are subject to change without notice. For more details, please contact us.

WM Systems LLC

8 Villa str., Budapest, H-1222 HUNGARY

Phone: +36 (1) 310 7075

Support: +36 (20) 333 1111

Our website: www.wmsystems.hu

Sales inquiry: intersales@wmsystems.hu

Support: support@wmsystems.hu