

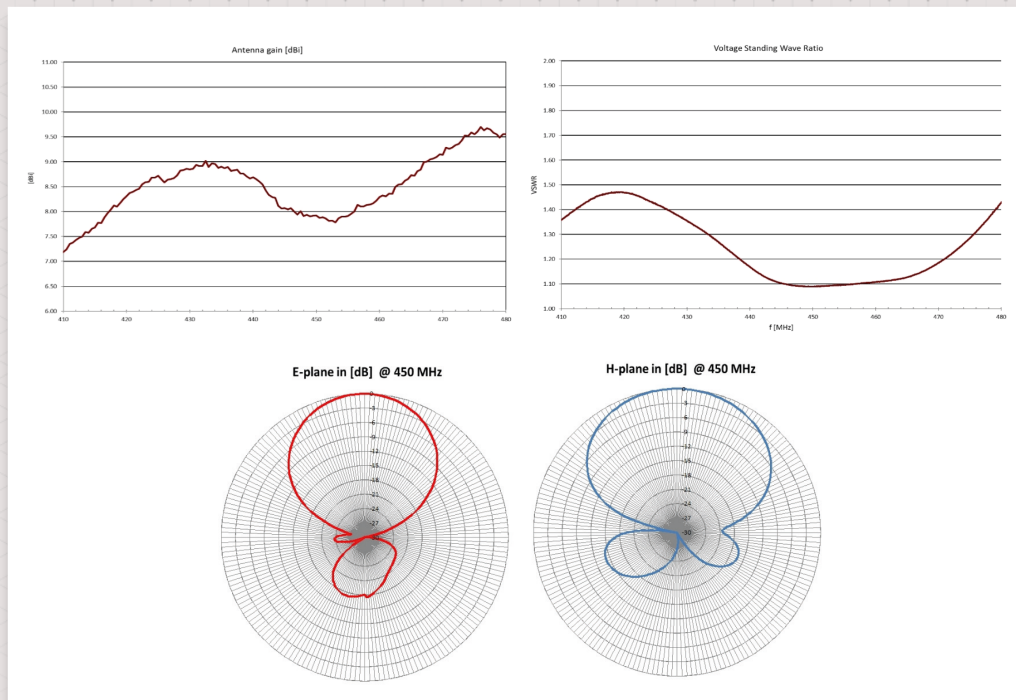
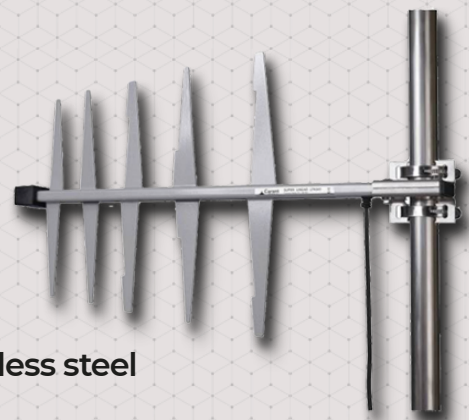
DIRECTIONAL LTE 450 ANTENNA



Outdoor, broadband, high-gain (9.5dBi) directional LTE 450 antenna (LPA 045)

TECHNICAL FEATURES

- Technology: LTE 450
- Frequency: 410-480 MHz
- VSWR: < 1.5 : 1
- Gain: max. 9.5 dBi
- Output power: 10 W
- Input Impedance: 50 Ω
- Polarization: Vertical / Orientation: V 80° to H 60°
- Front to Back Ratio (F/B): >15dB
- Cable: RG223
- Connector: N, SMA, FME
- Base material: Alloy aluminum / Retaining clamp: Stainless steel
- Plastic parts: ABS, Polycarbonat
- Mast diameter: 30 - 60mm



The presented images on the datasheet are for illustration purposes only. The details on the data sheet are for general information purposes only. WM Systems LLC cannot be held liable for erroneous information on the datasheet. The announced information are subject to change without notice. For more details, please contact us.

WM Systems LLC

8 Villa str., Budapest, H-1222 HUNGARY

Phone: +36 (1) 310 7075

Support: +36 (20) 333 1111

Our website: www.wmsystems.hu

Sales inquiry: intersales@wmsystems.hu

Support: support@wmsystems.hu