

# DEVICE MANAGER



**The remote management and maintenance of an IIoT solution can be a real challenge. Improve the network availability and operational efficiency of your fleet!**

Device Manager is a solution for remote device and gateway management which allows faster deployment and guarantees the secure and proper functioning of IoT devices after they have been deployed.

Our remote device management offers state-of-the-art management functionalities including rapid device onboarding with bulk provisioning, easy administration, in-depth visibility of device status, its performance metrics and security issues, logical groupings of devices into hierarchical structures for mass software and firmware updates.

The Microsoft® Windows® based application hosted on-premise for high security and continuous remote management of IoT devices (routers, modems etc.). Ideal for enterprise or government deployments with strict ICT policies.

## Optimized for Large Scale Enterprise Deployments

Full-fledged monitoring solution, by design optimized for enterprise device management – with features highly appreciated by our utility clients and telco partners. For example, it automatically imports user access control and permissions from Microsoft® Active Directory® for authentication. Designed to allow easy addition of new communication servers it provides maximum scalability.

Most industrial IoT deployments involve a huge number of devices. Large scale operations like these have to be optimized in order to allow faster time-to-market. The time spent on the deployment of each device adds up.

Our routers can be ordered with the Device Manager application pre-configured, so as soon as they are connected they are available in the remote management platform.

Deployment time can be reduced from 15-20 minutes per device to 1-2 minutes.





# DEVICE MANAGER



## MAIN FEATURES

Remote management and maintenance of IIoT devices (network availability, operation, software updates).



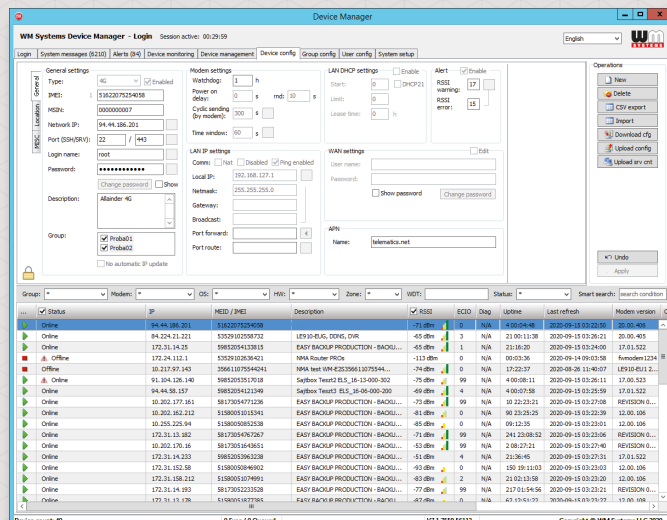
## MONITORING

- Monitoring of devices (availability, cellular signal strength, QoS, life signals)

Status	IP	Model / P/EI	Description	RSSI	ECD	Diag	Uptime	Last refresh	Modern version	OS version
Online	94.44.186.201	5102010207409	LEI510-ELC DONG. DLR	-71 dBm	1	N/A	4:00:29:56	2020-09-15 03:40:59	20.00.405	20200915
Online	94.44.186.201	5102010207409	LEI510-ELC DONG. DLR	-45 dBm	2	N/A	3:10:29:13	2020-09-15 03:40:59	20.00.405	20200915
Online	172.31.14.25	598205413815	EA9 BACKUP PRODUCTION - BACKU...	-45 dBm	1	N/A	21:36:45	2020-09-15 03:44:38	17.01.522	20200915
Online	172.31.14.23	5102010207409	NMA Router PRO4	-113 dBm	0	N/A	00:03:36	2020-09-14 09:35:58	firmware1234	firmware1234
Online	91.204.126.140	598205351918	Selfless Teapot ELS_16-1500-302	-79 dBm	99	N/A	4:00:07:58	2020-09-15 03:25:59	17.00.523	20200915
Online	94.44.58.157	5982054121349	Selfless Teapot ELS_16-1500-302	-49 dBm	4	N/A	4:00:07:58	2020-09-15 03:25:59	17.01.522	20200915
Online	10.202.176.18	5982054121349	EA9 BACKUP PRODUCTION - BACKU...	-75 dBm	99	N/A	10:22:36:39	2020-09-15 03:40:59	REVISION0.0...	REVISION0.0...
Online	10.202.176.18	5982054121349	EA9 BACKUP PRODUCTION - BACKU...	-75 dBm	99	N/A	90:23:53:00	2020-09-15 03:40:59	12.00.106	20200915
Online	18.255.225.94	5108005015341	EA9 BACKUP PRODUCTION - BACKU...	-41 dBm	0	N/A	09:13:20	2020-09-15 03:23:01	12.00.106	20200915
Online	172.31.13.182	5982054121349	EA9 BACKUP PRODUCTION - BACKU...	-75 dBm	99	N/A	24:23:58:52	2020-09-15 03:23:01	REVISION0.0...	REVISION0.0...
Online	172.31.14.233	598205351918	EA9 BACKUP PRODUCTION - BACKU...	-51 dBm	4	N/A	2:18:27:21	2020-09-15 03:27:46	REVISION0.0...	REVISION0.0...
Online	172.31.152.58	5108005015341	EA9 BACKUP PRODUCTION - BACKU...	-49 dBm	4	N/A	21:36:45	2020-09-15 03:27:46	17.01.522	20200915
Online	172.31.152.58	5108005015341	EA9 BACKUP PRODUCTION - BACKU...	-49 dBm	99	N/A	130:19:11:03	2020-09-15 03:23:01	12.00.106	20200915
Online	172.31.15.176	5982054121349	EA9 BACKUP PRODUCTION - BACKU...	-77 dBm	99	N/A	21:03:15:59	2020-09-15 03:23:01	REVISION0.0...	REVISION0.0...
Online	172.31.14.193	5982054121349	EA9 BACKUP PRODUCTION - BACKU...	-47 dBm	99	N/A	217:01:54:56	2020-09-15 03:23:01	12.00.106	20200915

## DEVICE MANAGEMENT

- Managing remote device operations (restart, factory reset, firmware upgrade, time setting)



## ALARMS, EVENTS, REPORTS

- Device messages, alerts and events
- Periodic reports, statistics

ID	Timestamp	Event ID	Message	Details	Device ID	Operator
1	2020-09-15 03:36:13 UTC+02:00	2	authpriv: warn: dhclient[2212]: Unknown connection attempt	172.31.15.176 (8)	5982054121349	System
2	2020-09-15 03:24:28 UTC+02:00	2	authpriv: warn: dhclient[2305]: Bad password attempt for 'root'	85.209.0.173 (598)	5982054121349	System
3	2020-09-15 03:24:28 UTC+02:00	2	authpriv: warn: dhclient[2305]: Bad password attempt for 'root'	85.209.0.173 (598)	5982054121349	System
4	2020-09-15 03:24:28 UTC+02:00	2	authpriv: warn: dhclient[2305]: Login attempt for nonexistent user	91.142.242.1 (1967)	5982054121349	System
5	2020-09-15 03:18:15 UTC+02:00	2	authpriv: warn: dhclient[2305]: Login attempt for nonexistent user	171.242.70.203 (5797)	5982054121349	System
6	2020-09-15 03:18:15 UTC+02:00	2	authpriv: warn: dhclient[2305]: Login attempt for nonexistent user	180.251.233.30 (5213)	5982054121349	System
7	2020-09-15 03:18:15 UTC+02:00	1	RSSD level restored (RSSD=+12)	16	5108005015341	System
8	2020-09-15 03:18:15 UTC+02:00	1	RSSD level restored (RSSD=+12)	12	5108005015341	System
9	2020-09-15 03:18:15 UTC+02:00	2	authpriv: warn: dhclient[1760]: Unknown connection attempt	192.35.168.218 (8)	5982054121349	System
10	2020-09-15 03:18:15 UTC+02:00	2	authpriv: warn: dhclient[1760]: Unknown connection attempt	192.35.168.218 (8)	5982054121349	System
11	2020-09-15 03:18:15 UTC+02:00	2	authpriv: warn: dhclient[1760]: Unknown connection attempt	192.35.168.218 (8)	5982054121349	System
12	2020-09-15 03:18:15 UTC+02:00	2	authpriv: warn: dhclient[1760]: Unknown connection attempt	192.35.168.218 (8)	5982054121349	System
13	2020-09-15 03:18:15 UTC+02:00	2	authpriv: warn: dhclient[1760]: Unknown connection attempt	192.35.168.218 (8)	5982054121349	System
14	2020-09-15 03:18:15 UTC+02:00	2	authpriv: warn: dhclient[1760]: Unknown connection attempt	192.35.168.218 (8)	5982054121349	System
15	2020-09-15 03:18:15 UTC+02:00	2	authpriv: warn: dhclient[1760]: Unknown connection attempt	192.35.168.218 (8)	5982054121349	System
16	2020-09-15 03:18:15 UTC+02:00	2	authpriv: warn: dhclient[1760]: Unknown connection attempt	192.35.168.218 (8)	5982054121349	System
17	2020-09-15 03:18:15 UTC+02:00	2	authpriv: warn: dhclient[1760]: Unknown connection attempt	192.35.168.218 (8)	5982054121349	System
18	2020-09-15 03:18:15 UTC+02:00	2	authpriv: warn: dhclient[1760]: Unknown connection attempt	192.35.168.218 (8)	5982054121349	System
19	2020-09-15 03:18:15 UTC+02:00	2	authpriv: warn: dhclient[1760]: Unknown connection attempt	192.35.168.218 (8)	5982054121349	System
20	2020-09-15 03:18:15 UTC+02:00	2	authpriv: warn: dhclient[1760]: Unknown connection attempt	192.35.168.218 (8)	5982054121349	System
21	2020-09-15 03:18:15 UTC+02:00	2	authpriv: warn: dhclient[1760]: Unknown connection attempt	192.35.168.218 (8)	5982054121349	System
22	2020-09-15 03:18:15 UTC+02:00	2	authpriv: warn: dhclient[1760]: Unknown connection attempt	192.35.168.218 (8)	5982054121349	System
23	2020-09-15 03:18:15 UTC+02:00	2	authpriv: warn: dhclient[1760]: Unknown connection attempt	192.35.168.218 (8)	5982054121349	System
24	2020-09-15 03:18:15 UTC+02:00	2	authpriv: warn: dhclient[1760]: Unknown connection attempt	192.35.168.218 (8)	5982054121349	System
25	2020-09-15 03:18:15 UTC+02:00	2	authpriv: warn: dhclient[1760]: Unknown connection attempt	192.35.168.218 (8)	5982054121349	System
26	2020-09-15 03:18:15 UTC+02:00	2	authpriv: warn: dhclient[1760]: Unknown connection attempt	192.35.168.218 (8)	5982054121349	System
27	2020-09-15 03:18:15 UTC+02:00	2	authpriv: warn: dhclient[1760]: Unknown connection attempt	192.35.168.218 (8)	5982054121349	System
28	2020-09-15 03:18:15 UTC+02:00	2	authpriv: warn: dhclient[1760]: Unknown connection attempt	192.35.168.218 (8)	5982054121349	System
29	2020-09-15 03:18:15 UTC+02:00	2	authpriv: warn: dhclient[1760]: Unknown connection attempt	192.35.168.218 (8)	5982054121349	System
30	2020-09-15 03:18:15 UTC+02:00	2	authpriv: warn: dhclient[1760]: Unknown connection attempt	192.35.168.218 (8)	5982054121349	System
31	2020-09-15 03:18:15 UTC+02:00	2	authpriv: warn: dhclient[1760]: Unknown connection attempt	192.35.168.218 (8)	5982054121349	System
32	2020-09-15 03:18:15 UTC+02:00	2	authpriv: warn: dhclient[1760]: Unknown connection attempt	192.35.168.218 (8)	5982054121349	System
33	2020-09-15 03:18:15 UTC+02:00	2	authpriv: warn: dhclient[1760]: Unknown connection attempt	192.35.168.218 (8)	5982054121349	System
34	2020-09-15 03:18:15 UTC+02:00	2	authpriv: warn: dhclient[1760]: Unknown connection attempt	192.35.168.218 (8)	5982054121349	System
35	2020-09-15 03:18:15 UTC+02:00	2	authpriv: warn: dhclient[1760]: Unknown connection attempt	192.35.168.218 (8)	5982054121349	System
36	2020-09-15 03:18:15 UTC+02:00	2	authpriv: warn: dhclient[1760]: Unknown connection attempt	192.35.168.218 (8)	5982054121349	System
37	2020-09-15 03:18:15 UTC+02:00	2	authpriv: warn: dhclient[1760]: Unknown connection attempt	192.35.168.218 (8)	5982054121349	System
38	2020-09-15 03:18:15 UTC+02:00	2	authpriv: warn: dhclient[1760]: Unknown connection attempt	192.35.168.218 (8)	5982054121349	System
39	2020-09-15 03:18:15 UTC+02:00	2	authpriv: warn: dhclient[1760]: Unknown connection attempt	192.35.168.218 (8)	5982054121349	System
40	2020-09-15 03:18:15 UTC+02:00	2	authpriv: warn: dhclient[1760]: Unknown connection attempt	192.35.168.218 (8)	5982054121349	System
41	2020-09-15 03:18:15 UTC+02:00	2	authpriv: warn: dhclient[1760]: Unknown connection attempt	192.35.168.218 (8)	5982054121349	System
42	2020-09-15 03:18:15 UTC+02:00	2	authpriv: warn: dhclient[1760]: Unknown connection attempt	192.35.168.218 (8)	5982054121349	System
43	2020-09-15 03:18:15 UTC+02:00	2	authpriv: warn: dhclient[1760]: Unknown connection attempt	192.35.168.218 (8)	5982054121349	System
44	2020-09-15 03:18:15 UTC+02:00	2	authpriv: warn: dhclient[1760]: Unknown connection attempt	192.35.168.218 (8)	5982054121349	System
45	2020-09-15 03:18:15 UTC+02:00	2	authpriv: warn: dhclient[1760]: Unknown connection attempt	192.35.168.218 (8)	5982054121349	System
46	2020-09-15 03:18:15 UTC+02:00	2	authpriv: warn: dhclient[1760]: Unknown connection attempt	192.35.168.218 (8)	5982054121349	System
47	2020-09-15 03:18:15 UTC+02:00	2	authpriv: warn: dhclient[1760]: Unknown connection attempt	192.35.168.218 (8)	5982054121349	System
48	2020-09-15 03:18:15 UTC+02:00	2	authpriv: warn: dhclient[1760]: Unknown connection attempt	192.35.168.218 (8)	5982054121349	System
49	2020-09-15 03:18:15 UTC+02:00	2	authpriv: warn: dhclient[1760]: Unknown connection attempt	192.35.168.218 (8)	5982054121349	System
50	2020-09-15 03:18:15 UTC+02:00	2	authpriv: warn: dhclient[1760]: Unknown connection attempt	192.35.168.218 (8)	5982054121349	System

## SECURITY

- AES encryption, TLS certificate keys values
- Microsoft® Windows® compatible application, it has a client- and a server version.

Ask our sales about licensing conditions.

The presented images on the datasheet are for illustration purposes only. The details on the data sheet are for general information purposes only. WM Systems LLC cannot be held liable for erroneous information on the datasheet. The announced information are subject to change without notice. For more details, please contact us.

**WM Systems LLC**

8 Villa str., Budapest, H-1222 HUNGARY

Phone: +36 (1) 310 7075

Support: +36 (20) 333 1111

Our website: [www.wmsystems.hu](http://www.wmsystems.hu)

Sales inquiry: [intersales@wmsystems.hu](mailto:intersales@wmsystems.hu)

Support: [support@wmsystems.hu](mailto:support@wmsystems.hu)